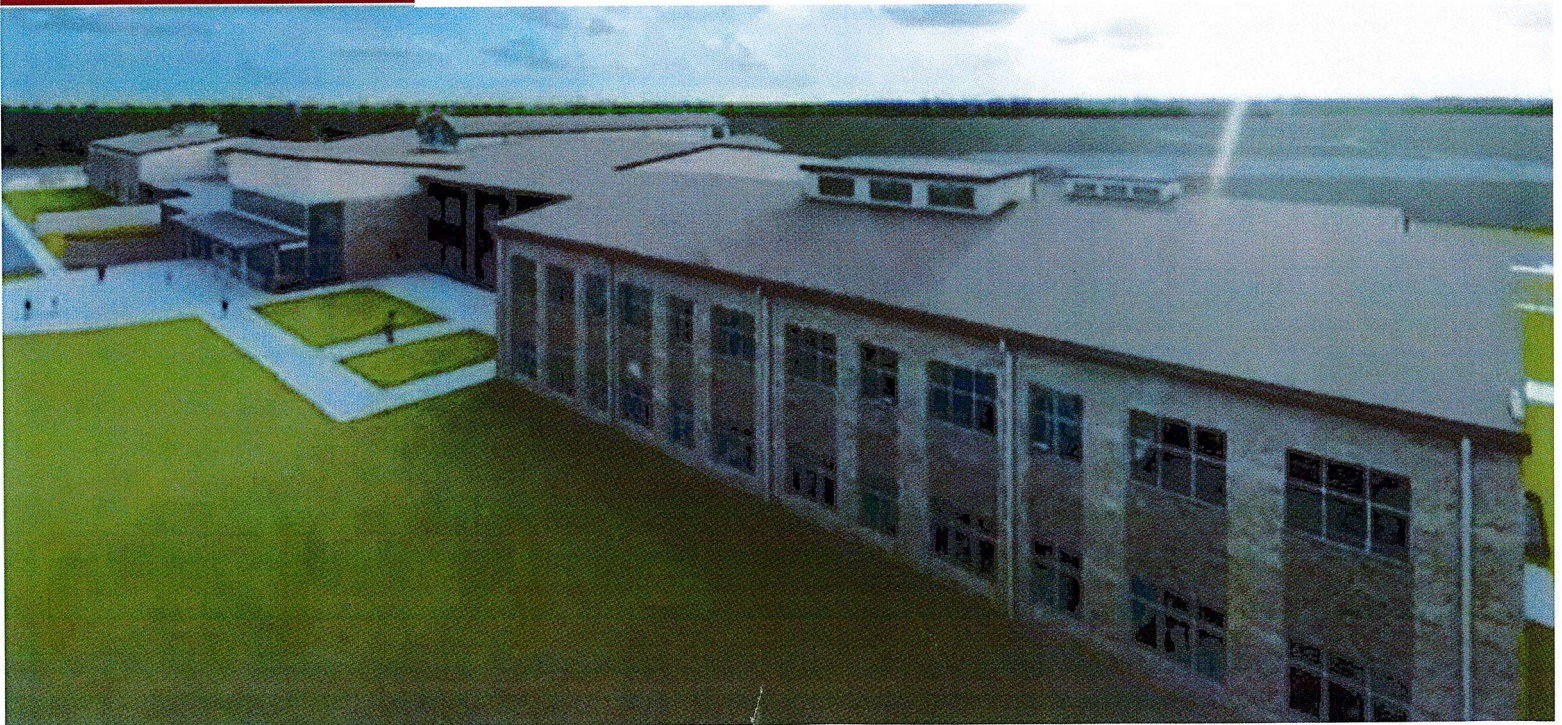




New Construction

PROGRESS UPDATE
January 2024

Southeast Pre K-12 School





PROJECT SUMMARY

Site Development & Landscaping

January 2024 Progress

- Northside Downspout Storm Piping– 10%
- Site Feeder Wire– 90%

Upcoming Progress

- Southside Downspout Storm Piping
- Site Feeder Wire



PROJECT SUMMARY

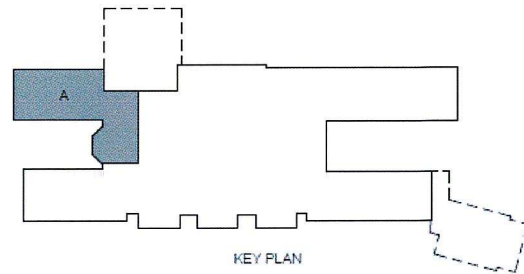
Area A

January 2024 Progress

- Wall Panels– 50%
- Flooring– 40%
- Casework– 35%
- Finish Paint– 100%
- Ceiling Grid– 100%
- Ceiling Pads– 40%
- Tech Cabling– 100%

Upcoming Progress

- Casework
- Flooring
- Ceiling Pads
- Wall Panels



PROJECT SUMMARY

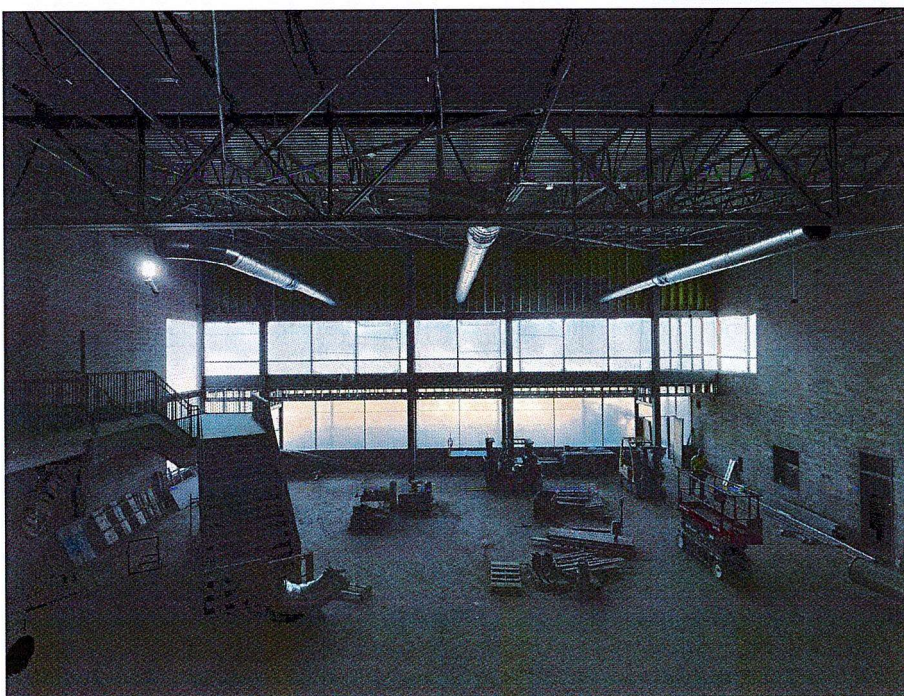
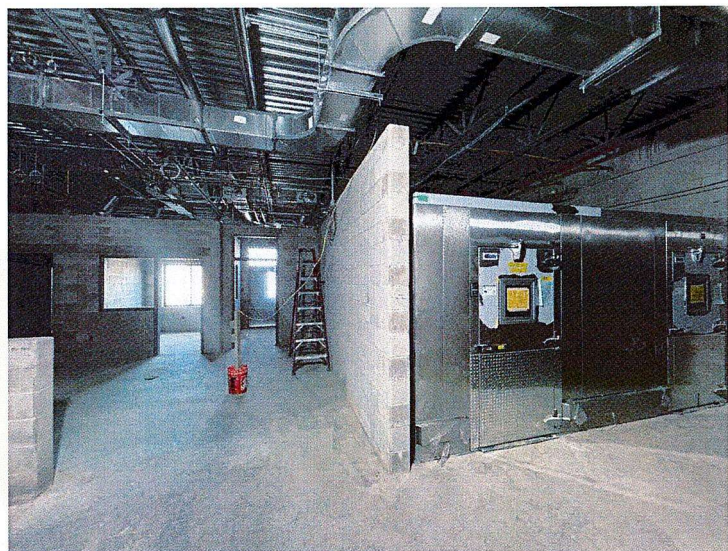
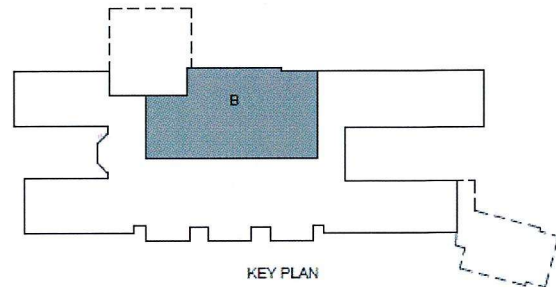
Area B

January 2024 Progress

- Pipe Labeling– 50%
- Second Floor MEP Overhead Ongoing– 85%
- Roof Finishes– 10%
- Set Stairwell– 100%
- Pour Stairs– 80%
- Install Walk in– 85%
- Pipe Insulation– 50%
- Prep CMU Walls for Paint– 100%

Upcoming Progress

- Pipe Labeling and Insulation
- Install Kitchen Hood
- Second Floor MEP Overhead Rough-in
- Pour Stair
- Prime Paint



PROJECT SUMMARY

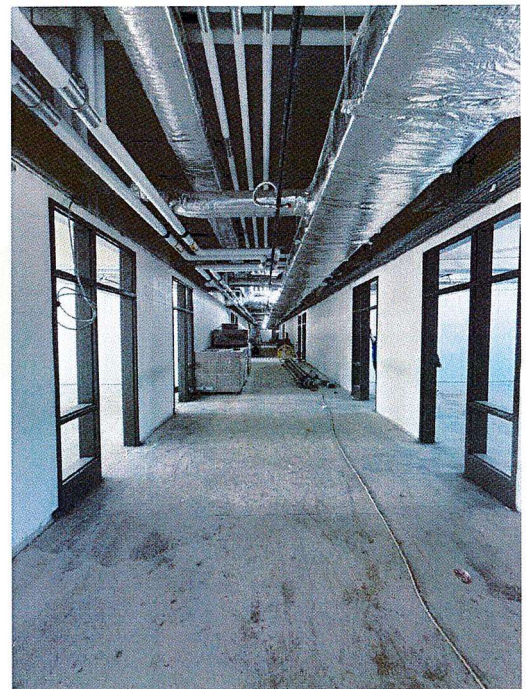
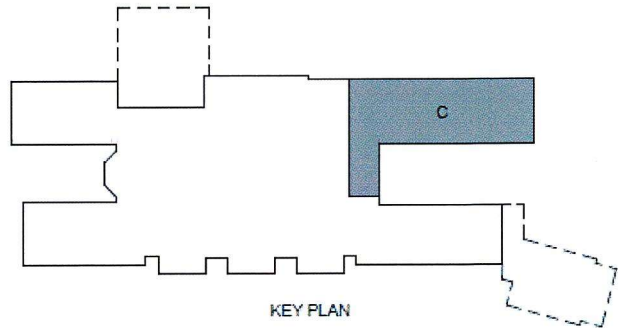
Area C

January 2024 Progress

- Wall Panels– 10%
- Pipe Insulation– 90%
- Pipe Labeling– 100%
- Roof Finishes– 100%
- Hang Wall Board– 100%
- Drywall Finish Taping– 100%
- Prime Paint– 100%
- Finish Paint– 30%
- Ceiling Grid– 25%
- Tech Cabling– 80%

Upcoming Progress

- Finish Paint
- Ceiling Grid
- Ceiling Pads
- Tech Cabling



PROJECT SUMMARY

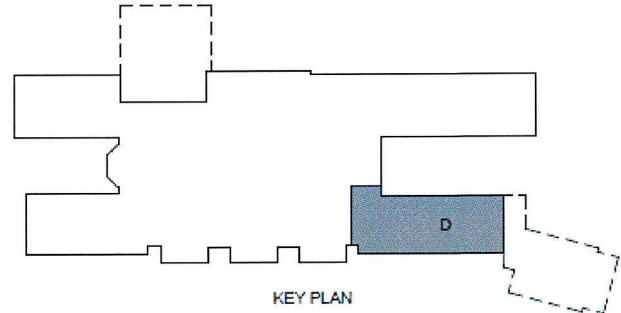
Area D

January 2024 Progress

- MEP Rough – In– 85%
- MEP Piping– 85%
- Roof Finishes– 10%
- Pipe Insulation– 10%
- Hang Wall Board– 80%
- Prep CMU Walls for Paint– 100%

Upcoming Progress

- MEP Rough – In
- MEP Piping
- Pipe Insulation
- Prime Paint
- Roof Finishes

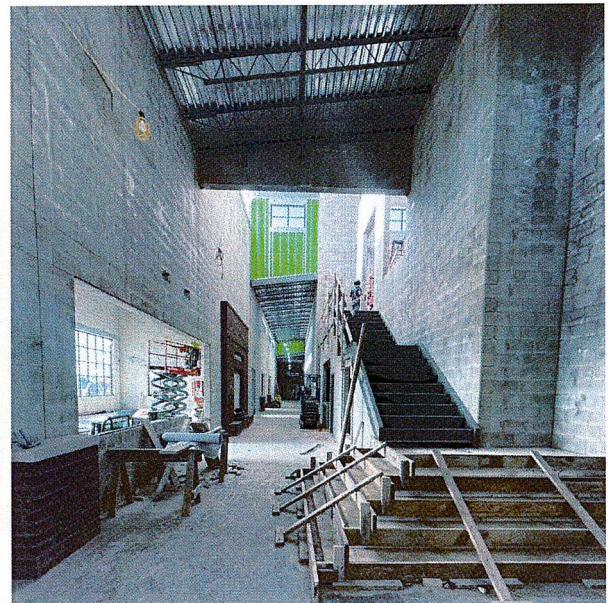
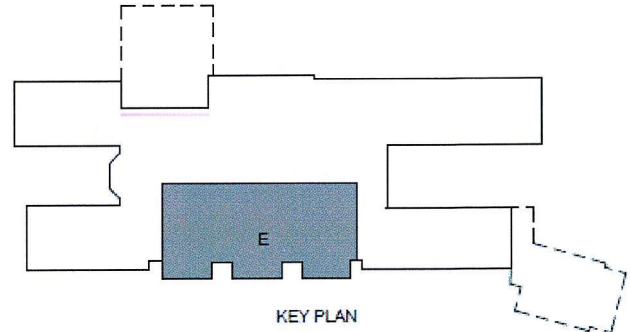


PROJECT SUMMARY

Area E

January 2024 Progress

- Prep CMU Walls for Paint– 100%
- MEP Piping– 40%
- Form and Pour Stair Seating-100%
- Prime Paint– 10%
- Set Admin Windows– 100%
- Temp Enclosure– 100%
- Temp Heat– 100%
- Cavity Insulation and Brick Veneer– 100%



Upcoming Progress

- MEP Piping
- Prime Paint
- Pour Stair
- Gym Equipment
- Wall Framing

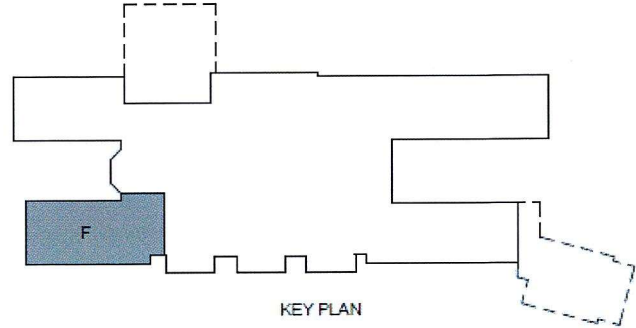


PROJECT SUMMARY

Area F

January 2024 Progress

- Roof Finishes– 100%
- Tech Cabling– 100%
- Finish Paint– 100%
- Ceiling Grid– 100%
- Ceiling Pads– 40%



Upcoming Progress

- Ceiling Pads
- Flooring
- Casework

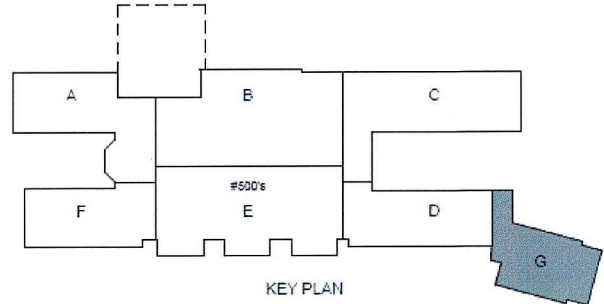


PROJECT SUMMARY

Area G

January 2024 Progress

- MEP Rough-In– 70%
- Cavity Insulation and Brick Veneer– 100%
- Temp Roof Dry-in– 100%
- Temp Heat– 100%
- MEP Piping– 45%
- Prep CMU Walls for Paint– 100%
- Set Windows– 100%



Upcoming Progress

- MEP Piping
- MEP Rough-In

